

Telephone IT-B1

Teléfono IT-B1

Operating Instructions  
Manual de instrucciones (verso)

Sony Corporation © 1999 Printed in the Philippines

Owner's Record

The model and the serial numbers are located at the bottom of the unit. Record the serial number in the space provided below. Refer to these numbers whenever you call upon your Sony dealer regarding this product.

Model No. IT-B1 Serial No. \_\_\_\_\_

For the customers in the USA

IMPORTANT SAFETY INSTRUCTIONS

When using your telephone equipment, basic safety precautions should always be followed to reduce the risk of fire, electric shock and injury to persons, including the following:

1. Read and understand all instructions.
2. Follow all warnings and instructions marked on the product.
3. Disconnect this product from the telephone line before cleaning. Do not use liquid cleaners or aerosol cleaners. Use a damp cloth for cleaning.
4. Do not use this product near water, for example, near a bath tub, wash bowl, kitchen sink, or laundry tub, in a wet basement, or near a swimming pool.
5. Do not place this product on an unstable cart, stand, or table. The product may fall, causing serious damage to the product.
6. Slots and openings in the cabinet and the back or bottom are provided for ventilation. To protect it from overheating, these openings must not be blocked or covered. The openings should never be blocked by placing the product on the bed, sofa, rug, or other similar surface. This product should never be placed near or over a radiator or heat register. This product should not be placed in a built-in installation unless proper ventilation is provided.
7. Do not overload extension cords as this can result in the risk of fire or electric shock.
8. Never push objects of any kind into this product through cabinet slots as they may touch dangerous voltage points or short out parts that could result in a risk of fire or electric shock. Never spill liquid of any kind on the product.
9. To reduce the risk of electric shock, do not disassemble this product, but take it to a qualified service personnel when some service or repair work is required. Opening or removing covers may expose you to dangerous voltages or other risks. Incorrect reassembly can cause electric shock when the appliance is subsequently used.

10. Disconnect this product from the telephone line and refer servicing to qualified service personnel under the following conditions.
  - A. If liquid has been spilled into the product.
  - B. If the product has been exposed to rain or water.
  - C. If the product does not operate normally by following the operating instructions.
 

Adjust only those controls, that are covered by the operating instructions because improper adjustment of other controls may result in damage and will often require extensive work by a qualified technician to restore the product to normal operation.
  - D. If the product has been dropped or the cabinet has been damaged.
  - E. If the product exhibits a distinct change in performance.
11. Avoid using a telephone (other than a cordless type) during an electrical storm. There may be a remote risk of electric shock from lightning.
12. Do not use the telephone to report a gas leak in the vicinity of the leak.

SAVE THESE INSTRUCTIONS INFORMATION FOR GENERAL TELEPHONES

1. This equipment complies with Part 68 of the FCC rules. On the bottom of this equipment is a label that contains, among other information, the FCC registration number and ringer equivalence number (REN) for this equipment. If requested, this information must be provided to the telephone company.
2. The applicable registration jack (connector) USOC-RJ11C is used for this equipment.
3. This equipment is designed to be connected to the telephone network or premises wiring using a compatible modular jack which is Part 68 compliant. The FCC compliant telephone cord and modular plug is provided with this equipment.
4. The REN is used to determine the quantity of devices which may be connected to the telephone line. Excessive RENs on the telephone line may result in the devices not ringing in response to an incoming call. In most, but not all areas, the sum of the REN's should not exceed five (5.0). To be certain of the number of devices that may be connected to a line, as determined by the total RENs, contact the local telephone company.
5. If your equipment (IT-B1) causes harm to the telephone network, the telephone company will notify you in advance that temporary discontinuance of service may be required. But if advance notice isn't practical, the telephone company will notify the customer as soon as possible. Also, you will be advised of your right to file a complaint with the FCC if you believe it is necessary.
6. The telephone company may make changes in its facilities, equipment, operations or procedures that could affect the operation of the equipment. If this happens the telephone company will provide advance notice in order for you to make necessary modifications to maintain uninterrupted service.
7. If trouble is experienced with this equipment (IT-B1), for repair or warranty information, please contact Sony Direct Response Center: Tel 1-800-222-7669. If the equipment is causing harm to the telephone network, the telephone company may request that you disconnect the equipment until the problem is resolved.
8. All repairs will be performed by an authorized Sony service station.
9. This equipment cannot be used to party lines or coin lines.
10. This equipment is hearing aid compatible.

If your telephone is equipped with automatic dialers

When programming emergency numbers and (or) making test calls to emergency numbers:

1. Remain on the line and briefly explain to the dispatcher the reason for the call.
2. Perform such activities in the off-peak hours, such as early morning or late evenings.

Caution

You are cautioned that any changes or modifications not expressly approved in this manual could void your authority to operate this equipment.

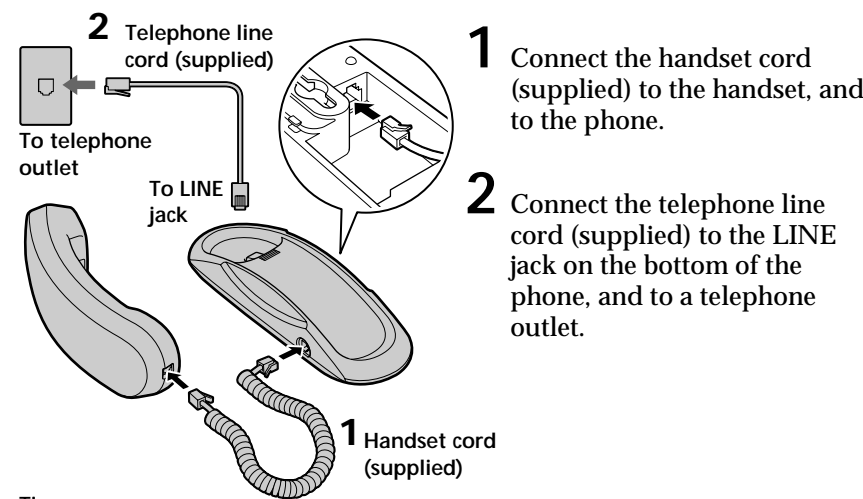
Note

This equipment has been tested and found to comply with the limits for a Class B digital device, pursuant to Part 15 of the FCC Rules. These limits are designed to provide reasonable protection against harmful interference in a residential installation. This equipment generates, uses and can radiate radio frequency energy and, if not installed and used in accordance with the instructions, may cause harmful interference to radio communications. However, there is no guarantee that interference will not occur in a particular installation. If this equipment does cause harmful interference to radio or television reception, which can be determined by turning the equipment off and on, the user is encouraged to try to correct the interference by one or more of the following measures:

- Reorient or relocate the receiving antenna.
- Increase the separation between the equipment and receiver.
- Connect the equipment into an outlet on a circuit different from that to which the receiver is connected.
- Consult the dealer or an experienced radio/TV technician for help.

Setting up the phone

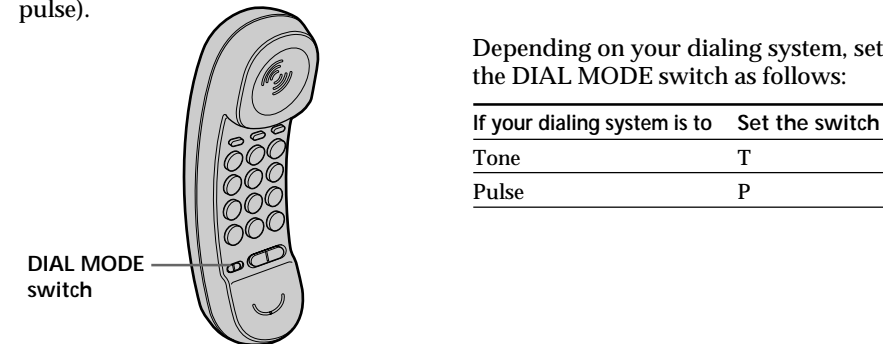
Connect the phone



- Tips
- If your telephone outlet is not modular, contact your telephone service company for assistance.
  - If you want to hang the phone on the wall, see "Mounting the phone on a wall".

Choose the dialing mode

For the phone to work properly, select an appropriate dialing mode (tone or pulse).

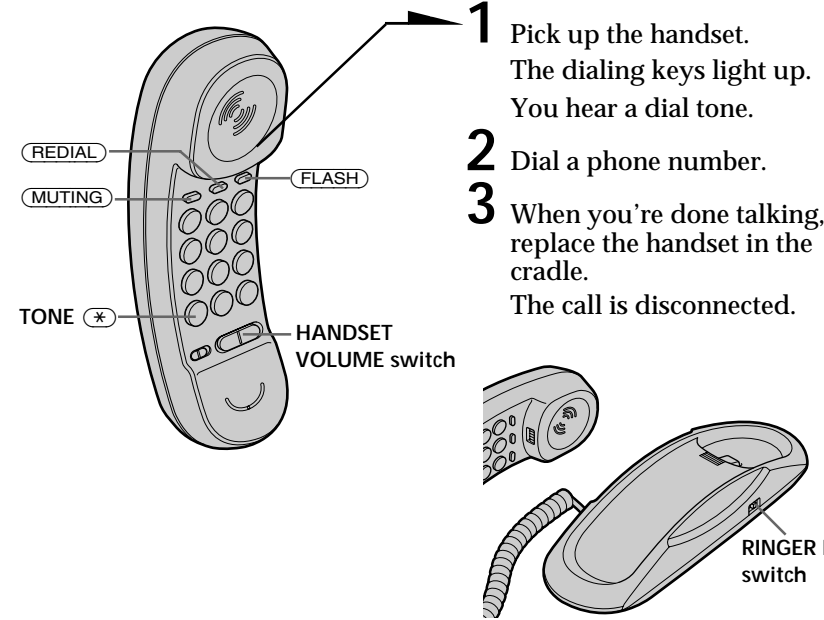


If you aren't sure of your dialing system

Make a trial call with the DIAL MODE switch set to T. If the call connects, leave the switch as is; otherwise, set to P.

Making and receiving calls

Making a call



Receiving a call

When you hear the phone ring, pick up the handset. When you're done talking, replace the handset in the cradle.

Additional tasks

To	Do this
Adjust the ringer volume	Set the RINGER LEVEL switch to H (high), L (low) or OFF.
Adjust the handset volume	Set the HANDSET VOLUME switch to H (high), M (middle) or L (low).
Switch to tone dialing temporarily	Press TONE (*) after you're connected. The line will remain in tone dialing until disconnected.
Mute a call	Press and hold MUTING. While pressing MUTING you can hear the other party but the other party cannot hear you.
Switch to another call ("call waiting" service*)	Press FLASH. Press FLASH again to get back to the first caller.

\* Contact your telephone company to subscribe to this service.

Redialing

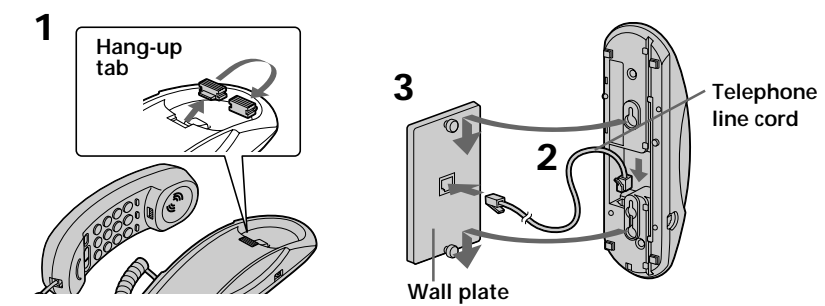
You can redial the last number called with just one touch of the REDIAL button. This lets you easily redial the same number again if, for example, the line was busy.

- 1 Pick up the handset. The dialing keys light up. You hear a dial tone.
- 2 Press REDIAL.

Note  
You can redial the number which consists of up to 31 digits, including a press of tone, which is counted as one digit.

Mounting the phone on a wall

- 1 Reverse the hang-up tab.
- 2 Plug the telephone line cord to the LINE jack and to the telephone outlet.
- 3 Hook the phone to the wall plate.



Maintenance

On handling

- Do not attempt to disassemble the casing. Refer servicing to qualified personnel only.
- Do not put foreign objects into the unit. Should any liquid or solid object fall into the unit, unplug the unit and have it checked by qualified personnel before operating the unit any further.
- Do not drop the unit as a malfunction may result.

On cleaning

Clean the cabinets with a soft cloth slightly moistened with water or a mild detergent solution. Do not use any type of abrasive pad, scouring powder or solvent such as alcohol or benzene as they may damage the finish of the cabinet.

If you have any questions or problems concerning your phone, please consult your nearest Sony dealer.

Troubleshooting

Symptom	Remedy
You hear no dial tone.	• Make sure the telephone line cord is securely connected to the telephone outlet.
The phone does not connect at all, even the numbers you dial are correct.	• Make sure the dial mode setting (tone or pulse) is correct.
The phone does not ring.	• Set the RINGER LEVEL switch to H or L.
The phone does not redial correctly.	• Make sure the number (including the tone digits, if used) you last dialed does not exceed 31 digits. • Make sure the last dialed number is really the one you want to dial.

Specifications

Dial signal	Tone, 10 PPS (pulse) selectable
Dimensions	Approx. 69 × 74.5 × 225 mm (w/h/d) (Approx. 2 3/4 × 3 × 8 7/8 inches)
Mass	Approx. 485 g (Approx. 17 oz), attachments included
Supplied accessories	• Telephone line cord • Handset cord

Design and specifications are subject to change without notice.



